

Plymouth Economic Intelligence Brief – July 2024



PLYMOUTH
CITY COUNCIL



Anna Peachey

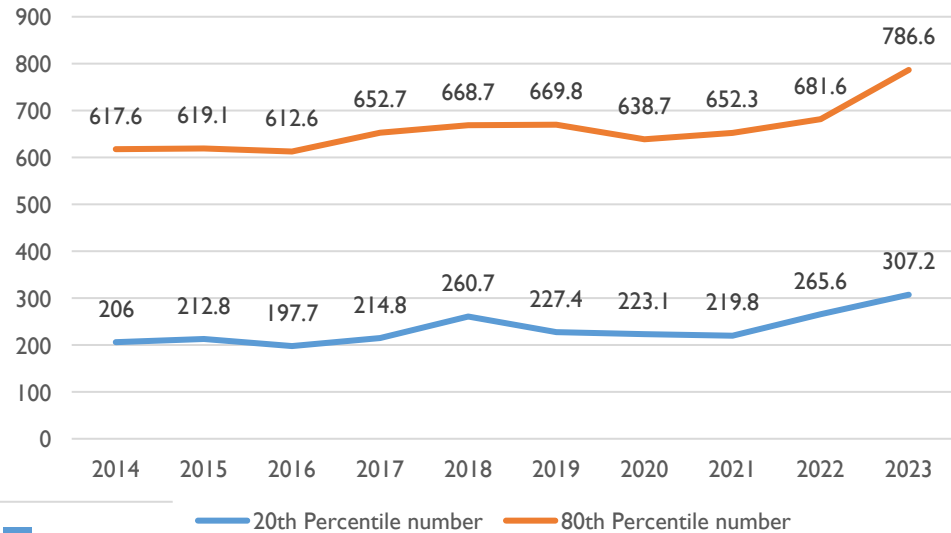
Manager for Economy/Partnerships and Regeneration
Plymouth City Council

Labour Market: Wage Growth & Full-time vs Part-time

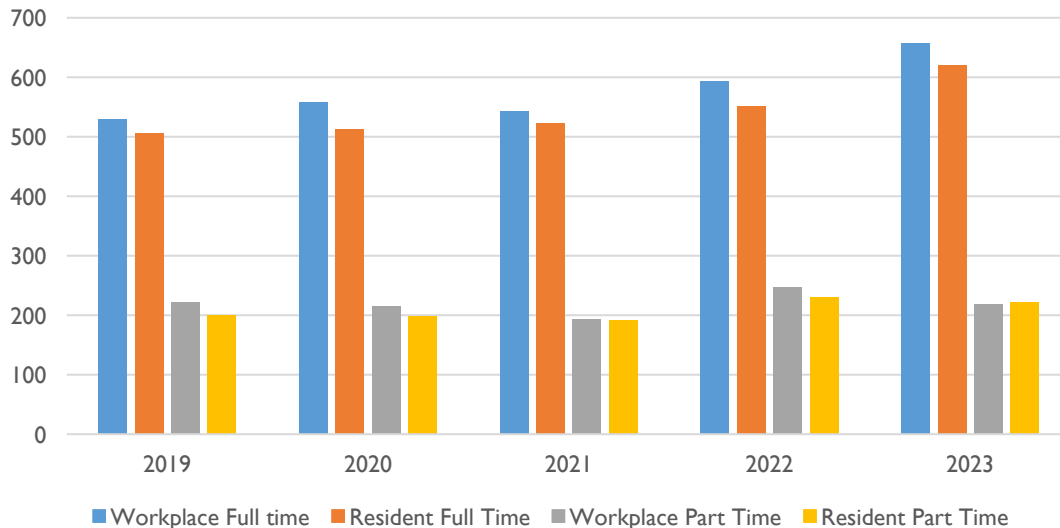


- Wage Growth has been seen for both the highest and lowest earners in the City.
- Despite impact of Covid, significant wage growth for both groups over the last 3 years.

Plymouth Weekly Pay - 20th vs 80th Percentile



Full-time vs Part-time wages
Plymouth Residents and Workplace



- Over the last 5 years, Plymouth has seen significant growth in full-time wages both for residents and workers.
- Part-time wages have not seen significant levels of growth over the same period though.

Three Target Audience for Inclusive Growth Pillar

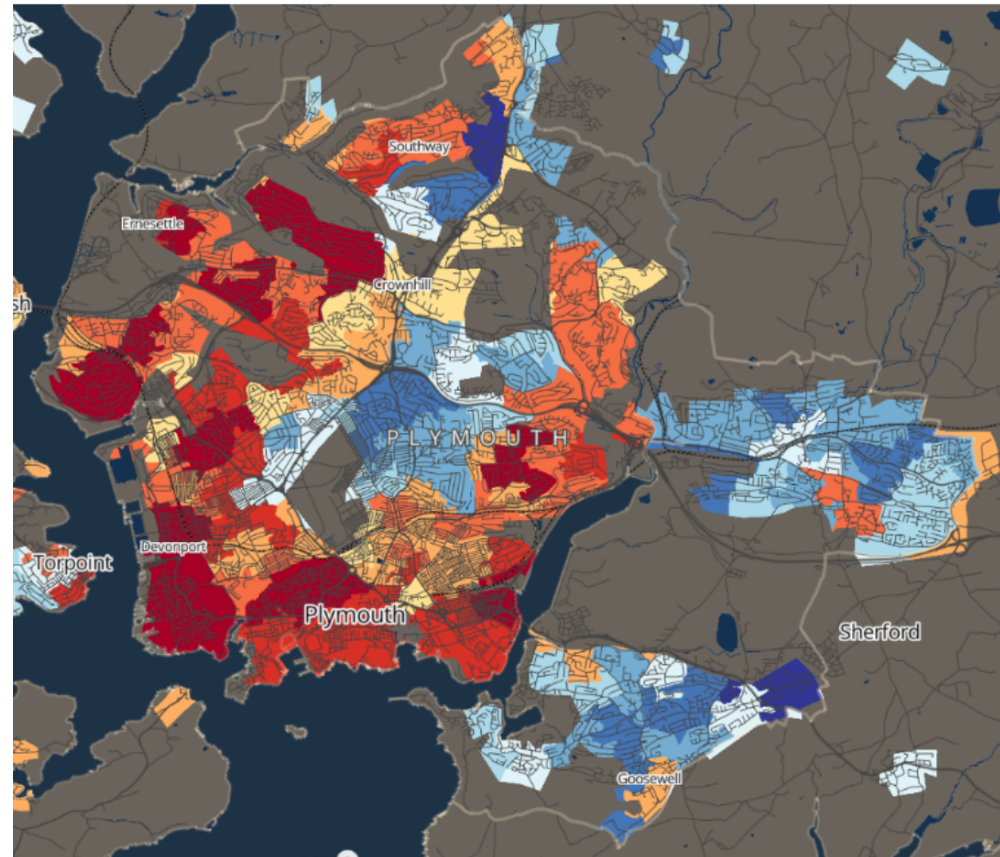


- Deprived communities
- Caring responsibilities
- Health inequalities

Deprived Communities:



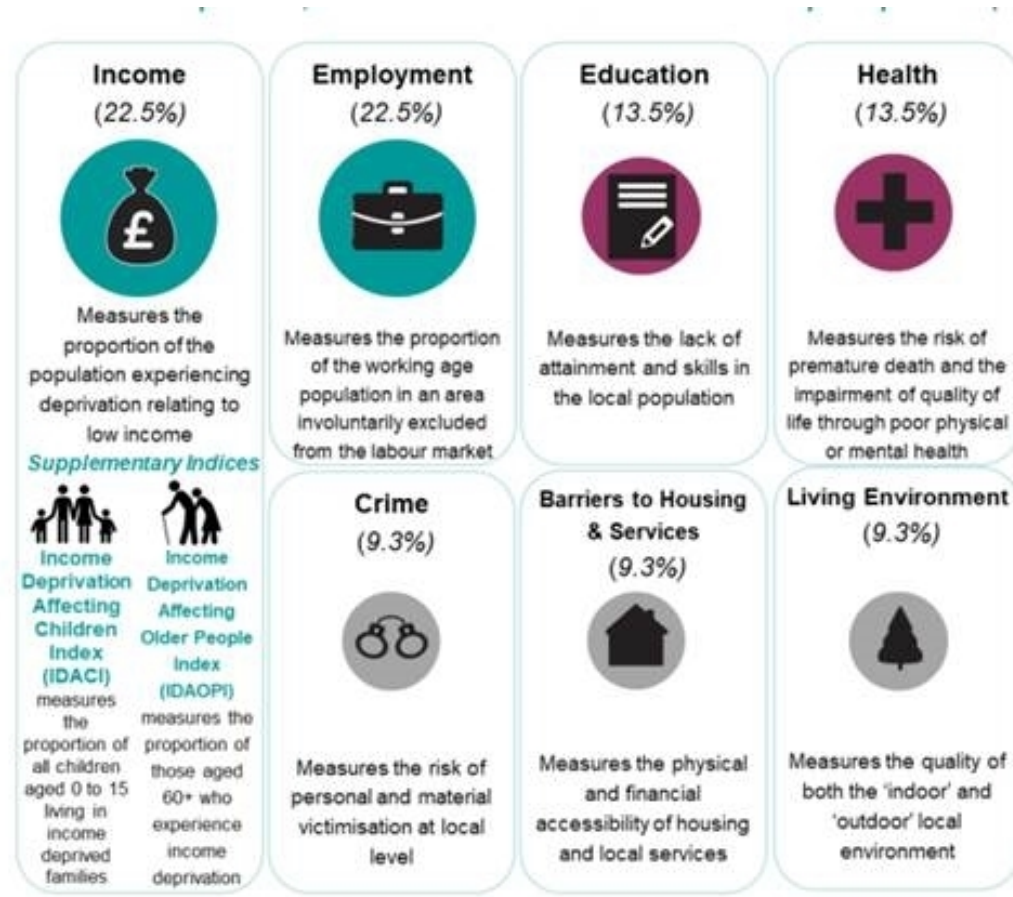
- Indices of Deprivation
- 28 Lower Super Output Areas in lowest 10% in England



Deprived Communities:



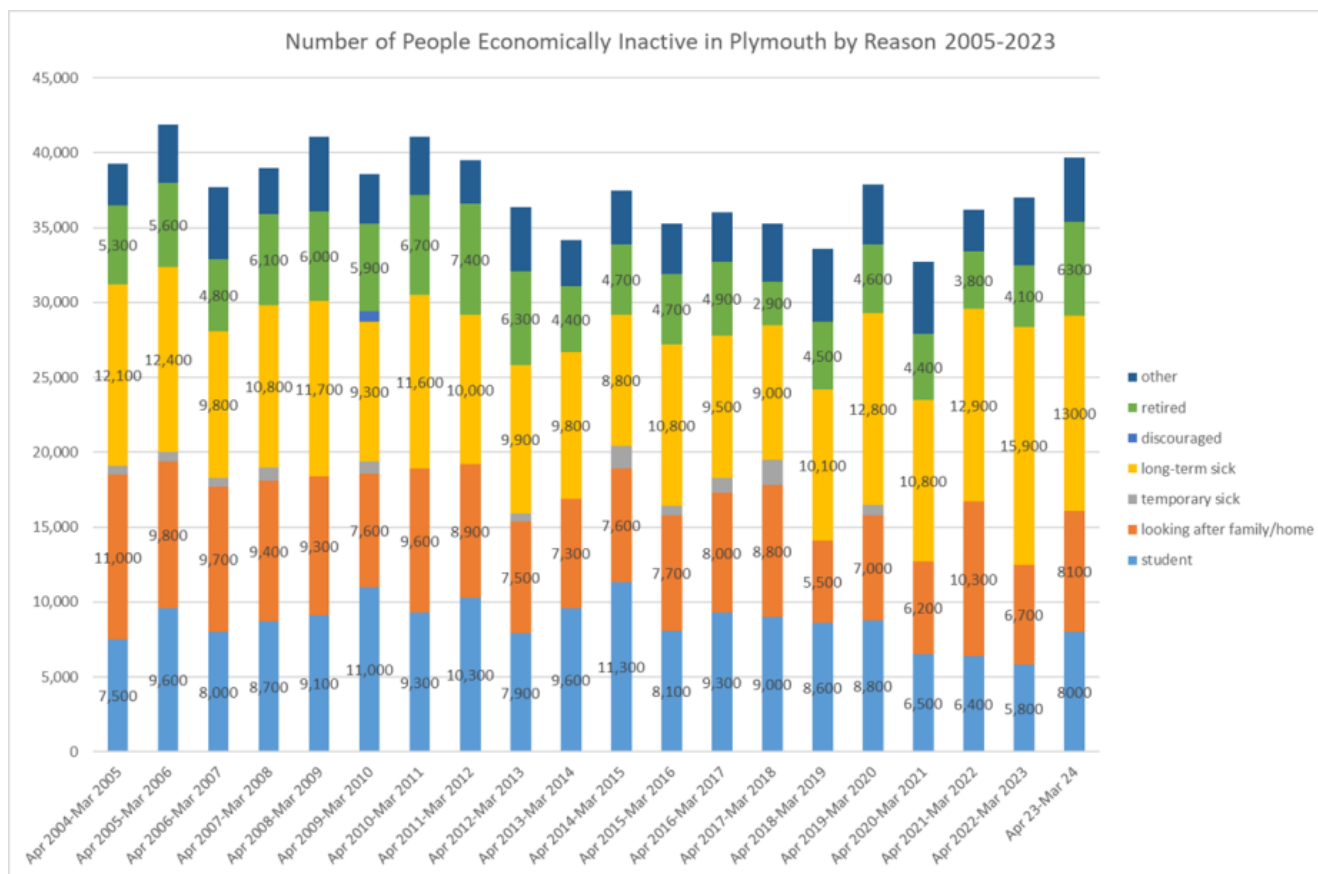
- 7 domains
- Direct impact from Economic Development:
 - Income,
 - Employment,
 - Skills



Economic Inactivity:

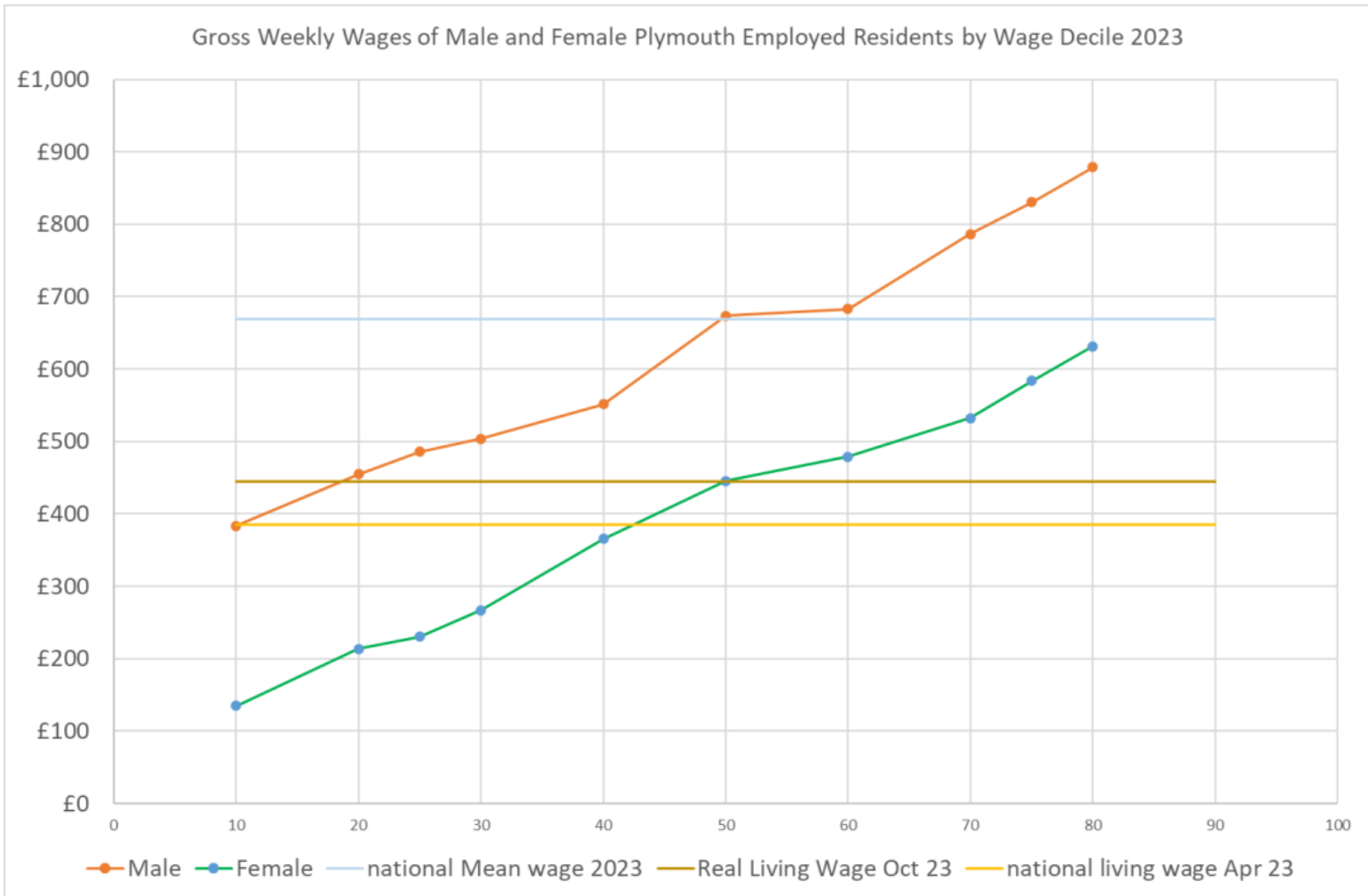


- Looking After Family and Home
- Long-term Sickness



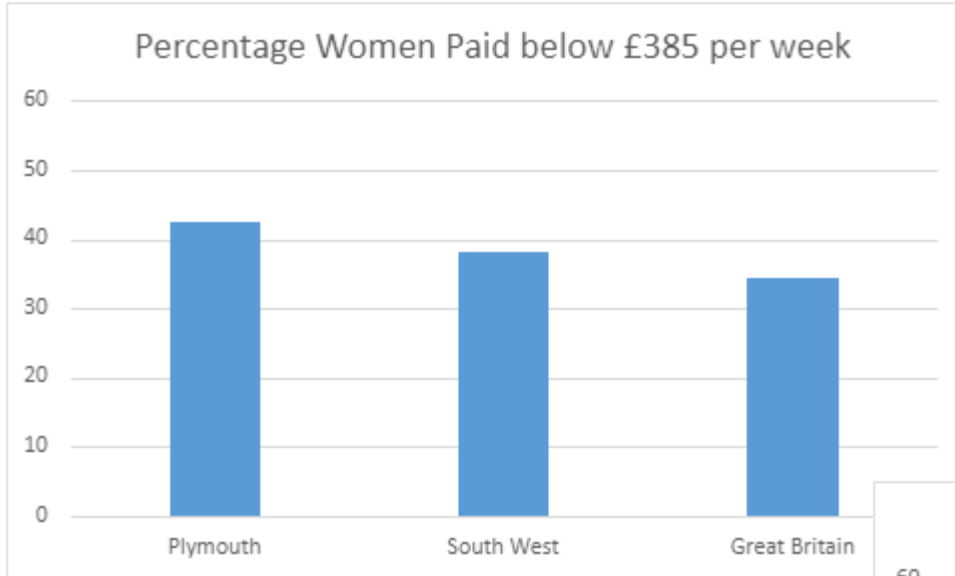
Caring responsibilities:

Male and Female Wages compared to wage benchmarks



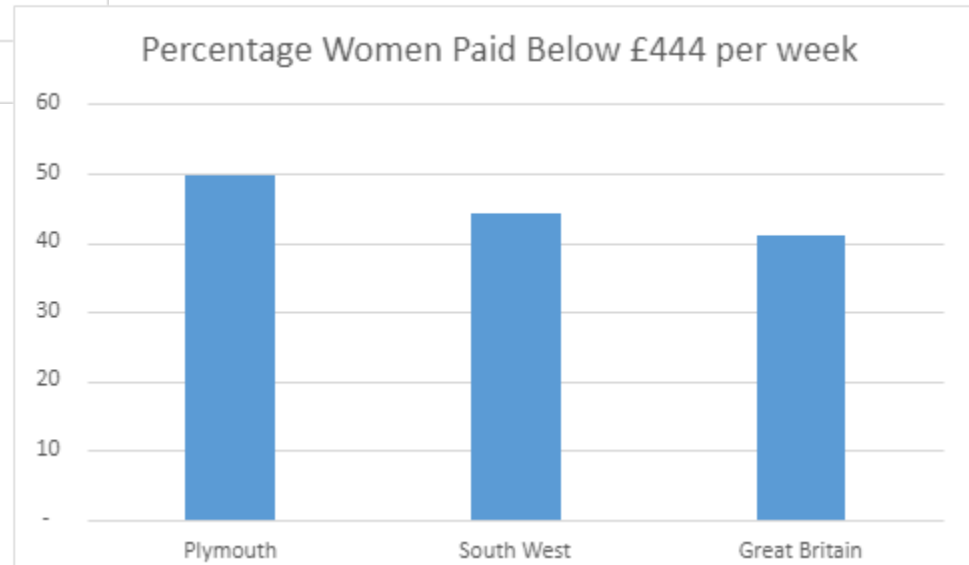
Caring responsibilities:

Comparison with South West and Great Britain



National Living Wage (Adult)
37 Hours
£10.42 per hour

Real Living Wage
37 Hours
£12 per hour



Work Limiting Health Conditions: Comparison with Great Britain since 2009

